



125 SX



ENGINE

1-cylinder, 2-stroke engine

DISPLACEMENT

124.8

RATED OUTPUT

MAX. TORQUE

COOLING SYSTEM

Liquid cooled

LENGTH / WIDTH / HEIGHT / WEIGHT

///

SEAT HEIGHT

958mm

GEARBOX

5 Speed

TANK CAPACITY

7.2 l



FROM

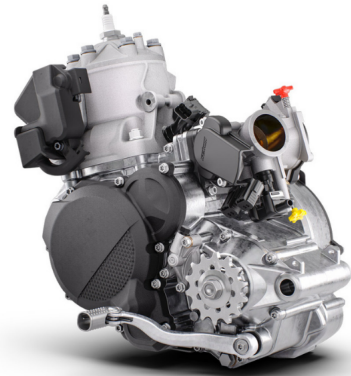
£7,799

+ OTR

125 SX FEATURES

ELECTRONIC FUEL INJECTION

Pre-mix gets a remix across the 2-stroke KTM SX range, with Electronic Fuel Injection setting the standard. Now there's no more fiddly jetting setup pre-race, And thanks to the Keihin EFI and reed valve case design, you can be guaranteed of laying down optimal power at any altitude, all of the time.



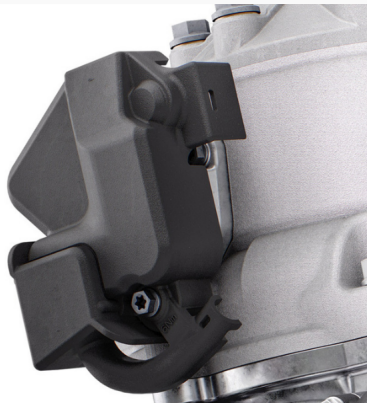
ELECTRIC START

Picture this; You're 7 laps into an absolute ripper of a race. You miss your line and end up stalling in a deep rut. But you don't sweat it. All you do is press the starter button and you blast off again to take the final flag. This is the reality on the 2025 KTM 125 SX. Thanks to a 12,8V 2 Ah lithium ion battery is placed under the rider's seat, a high-quality stator & pickup and super robust design, the only thing you'll be kicking - is ass.

EASY SUSPENSION ADJUSTMENT

As always, the suspension boasts an easy tool-free setup at both ends, ensuring you chase down the podium in total control. On the rear, a hand-adjustable dual compression control allows riders to adjust high- and low-speed settings in a matter of seconds. The forks on the front end are also easily adjusted thanks to hand-adjustable clickers on the bottom of the fork shoe and top cap.



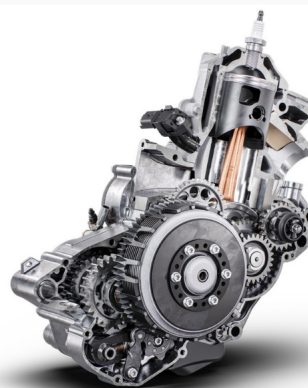


EFI + POWER VALVE

With EFI comes great rideability. Along with the electronic fuel injection and a power valve on the KTM 125 SX, allowing for more usable power throughout the rev range. Smoother power means better traction. Better traction means holeshot heaven!

PERFORMANCE

Designed to churn out torque the 2025 KTM 125 SX is set to continue its dominance in its class with unrelenting forward momentum. With an overall engine weight of only 17.86 kg and impressive horsepower figures, this lightweight powerplant retains its typical high-revving character, while laying down the grunt where it matters most.



SELECTABLE MAPS

Once again slicing into the 125 cc class with the leading edge of technology, the 2025 KTM 125 SX features a map select switch allowing the racer to switch between 2 engine maps. The White Map - or Map 1 - provides a linear, predictable power delivery ideally suited to attack hard-packed dirt with a leaner air-fuel mixture. Alternatively, the Green Map - Mapping 2 - is tuned for loose, thick sandy conditions with a richer mix.

WP XACT FORK

Let's get the technical parts out of the way first; the 48 mm WP XACT AER forks fitted to the 2025 KTM SX and SX-F line-up features a capsulated air spring and pressurized oil chamber for progressive and consistent damping, while oil and air bypasses reduce pressure peaks. In combination with the mid-valve damping system, all this provides exceptional feedback and rider comfort. The fork also boasts new settings, which not only compliment the updated frame and rear linkage, but ensures stellar p



WP XACT SHOCK

Keeping things in check at the rear, the WP XACT rear shock has also undergone some changes for 2025 using settings directly from the KTM Factory Racing Teams. The improved frame and shock geometry mean more ground clearance at the linkage, making it less susceptible to bottoming out. While we're on the topic, smaller diameter linkage bolts save weight, while new linkage seals refine rear shock response and advanced damping characteristics.

ENERGY ABSORPTION

Besides the expertly crafted, hydro-formed, laser-cut, and robot-welded frame being engineered to provide exceptional rider feedback and straight-line stability, it consists of specifically calculated parameters of longitudinal and torsional flex. This means the frame acts as a "shock absorber" of sorts, making for a less harsh ride, resulting in less rider fatigue over many hard laps.





ABSOLUTE CONTROL

Get ready for a full-on berm assault. The 2025 KTM SX and SX-F machines have received major frame updates directly from Factory Racing efforts. For starters, the frame area around the rear shock mount has been updated and made more streamlined, with new engine mounts and cut-outs for improved chassis flex. The front area of the frame is also updated, with a different wall thickness than the previous model year, with renewed engine mounts. This adds up to a 300g weight saving and improved flex fo

125 SX FINANCE

Flexible payment options to suit your budget

HP Finance

Hire Purchase

9.40% APR

£140.14

Monthly Payment

£500.00

Customer Deposit

60

Months Term

Cash Price:	£7848
Total Amount of Credit:	£7348
Agreement Duration:	60 months
Interest Rate (Fixed):	4.87%
Monthly Payments:	£140.14
Total Amount Payable:	£8,908.40

T&Cs apply. Subject to status. 18s and over. Guarantee may be required. Santander Consumer Finance RH1 1SR. This quotation, available through Santander Consumer Finance, is valid for 14 days from 29/08/2019. This is not a personal quotation and does not commit Santander Consumer Finance to enter into an agreement with you. Be sure you can afford the repayments before entering into a credit agreement. Santander Consumer (UK) PLC t/a Santander Consumer Finance is authorised and regulated by the Financial Conduct Authority in respect of agreements regulated by the Consumer Credit Act 1974 and for general insurance mediation activity. Authority under firm reference number is 444327. At the end of the agreement there are 3 options: (i) Part exchange the vehicle. (ii) Pay the Optional Final Payment to own the vehicle or (iii) Return the vehicle. Further charges may be made subject to the condition or mileage of the vehicle.

